



SASI

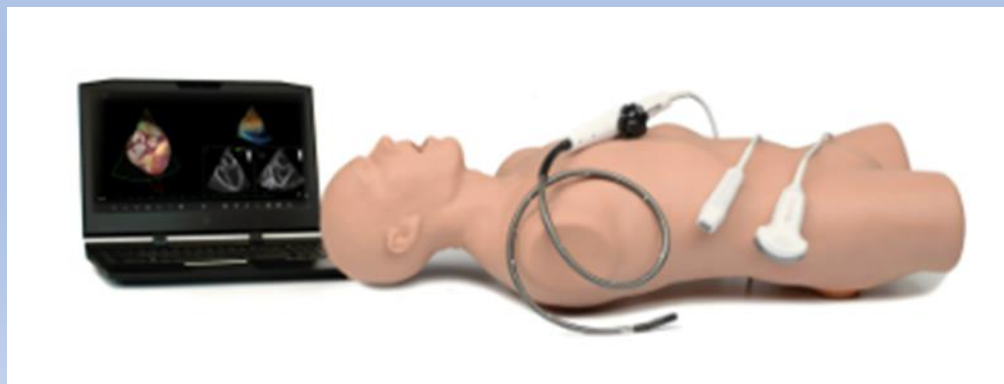
(SIMULATION & ADVANCED SKILLS INSTITUTE)

SIMULATORS

Updated 08.30.2023

Program Manager

570-887-6523





Gaumard Adult HAL[®] (3201)

- Physiological responses
- Real monitoring
- Wireless and tetherless mobility
- Programmable airway and lung compliance

[Brochure](#)



Gaumard Pediatric HAL[®] (S2225)

- Interactive eyes and active facial expressions
- Dynamic lung compliance with true ventilator support
- Real patient monitor support
- Surgical airway, needle decompression, and chest tube
- Wireless and tetherless

[Brochure](#)

Gaumard NOELLE® (S554)

- Antepartum complications
- Routine and high-risk deliveries
- Postpartum emergencies

[Brochure](#)



Gaumard Newborn Tory®(S2210)

- Lifelike appearance and physiology
- Comprehensive cardiopulmonary physiology with feedback
- Fully responsive even while being carried

[Brochure](#)



Simbionix GI Mentor Simulator

- Gastrointestinal upper and lower endoscopic procedures
- Bronchoscopy
- 120 tasks and virtual patient cases
 - Diagnostic procedures
 - Advanced ERCP (Endoscopic Retrograde Cholangiopancreatography)
 - Endoscopic Ultrasound procedures

[GI Mentor | Simbionix](#)



Simbionix Lap Mentor III Simulator

- Fundamentals of Laparoscopic Surgery
- 19 training modules
- 80 tasks and cases
 - General
 - Gynecology
 - Urology
 - Bariatric
 - Colorectal
 - Thoracic

[LAP Mentor | Simbionix](#)



CAE Vimedix Ultrasound Simulation

- Psychomotor skills and cognitive skills
 - Probe handling
 - Image interpretation
 - Diagnoses
 - Clinical decision-making
- Available anatomy
 - Cardiac
 - TEE
 - Lung
 - Abdominal
- 80 Pathologies



Birth Simulator PROMPT Flex

The Advanced PROMPT Flex Birthing Simulator is an anatomically correct representation of a mother and baby. Its modular design allows for multiple training scenarios, and it forms the base for the complete PROMPT Flex range of birthing modules.

This birthing trainer offers a hybrid solution to your training needs. Quick and easy to set up straight from the box you are able to:

Use as a stand alone model for group learning

Secure to a bench top or bed for a more realistic bedside scenario to improve professional-patient communications

In addition to the functionality of the **PROMPT Flex Standard model**, this version of the PROMPT has a Bluetooth enabled Force Monitoring baby.

During labor there is a threshold of force that can result in brachial plexus injury during shoulder dystocia. The Force Monitoring Baby measures the force applied by trainees during drills. In conjunction with the Limbs & Things Birthing Simulator Software, instructors have the ability to record actions and interventions made, and the time to deliver the baby.



A simple meter mode in the software allows trainees valuable practice in applying force to the baby outside of the context of a scenario - enabling them to become familiar with the feel of both safe and excessive force before encountering a real obstetric emergency.

[Product Link](#)

Birthing Simulator PROMPT Flex – add on

[Postpartum Hemorrhage Module](#)

[Cervical Dilation & Effacement Module](#)

[Enhanced Caesarean Section Module](#)



SonoSim Ultrasonography

81 courses including:

- U/S Fundamentals
- U/S Guided Procedures
- Abdomen
- Breast
- Cardiac
- Genitourinary
- Head/neck
- Musculoskeletal
- Obstetrics/Gynecology
- Ocular
- Pediatric
- Protocols
- Pulmonary
- Vascular

[Ultrasound Education - Easy. Convenient. Effective. - SonoSim Ultrasound Training Solution](#)



NOTE: Individual & take-home training options. Ask staff for details.



SonoSim LiveScan®

- Instantly transform live volunteers and manikins into ultrasound training cases with real pathologic conditions.

[SonoSim LiveScan® -
Ultrasound Training](#)

Strategic Operations- Surgical Cut Suit

Human Worn Partial Task Surgical Simulator

- Extremity hemorrhage control
- Iliac Arterial Hemorrhage Control
- Surgical Cricothyrotomy
- Bilateral anterior and Axillary Chest Needle Thoracentesis
- Bilateral Surgical Chest Tube Thoracotomy
- Suturing and Stapling of skin in all locations
- Foley Catheterization
- External Bladder Tap
- Thoracotomy and Intra-thoracic Exploratory Surgery
- Laparotomy and Intra-abdominal Exploration
- Suturing of Gross Organ Structures
- Anastomosis and Resection
- Peripheral IV Access

[Surgical Cut Suit | Strategic Operations Inc.
\(strategic-operations.com\)](http://strategic-operations.com)





Strategic Operations- Open Surgical Simulation System

Chest Injury Pattern Capabilities

- Pneumothorax
- Hemothorax
- Pericardial tamponade
- Right ventricular laceration
- Left lung lower lobe bleeding injury

Abdominal Injury Pattern Capabilities

- Hemoperitoneum
- Grade IV liver injury
- Grade IV Splenic injury
- Grade IV left renal injury
- Zone II expanding hematoma
- Left external iliac artery injury
- Inferior vena cava injury
- Small bowel injury
- Colon injury
- Ureteral injury

[Open Surgical Simulation System \(OS3\) | Strategic Operations Inc. \(strategic-operations.com\)](https://www.strategic-operations.com)

VirtaMed ArthroS™

- Fundamentals of Arthroscopy Surgery (FAST)
 - Image centering
 - Horizon control
 - Telescoping
 - Triangulation
 - Use of different optics
- VirtaMed ArthroS™ Knee
 - Basics of knee arthroscopy
 - Complete diagnostic arthroscopies
- VirtaMed ArthroS™ Shoulder
 - Shoulder navigation
 - 15-point shoulder exam
 - Therapeutic cases



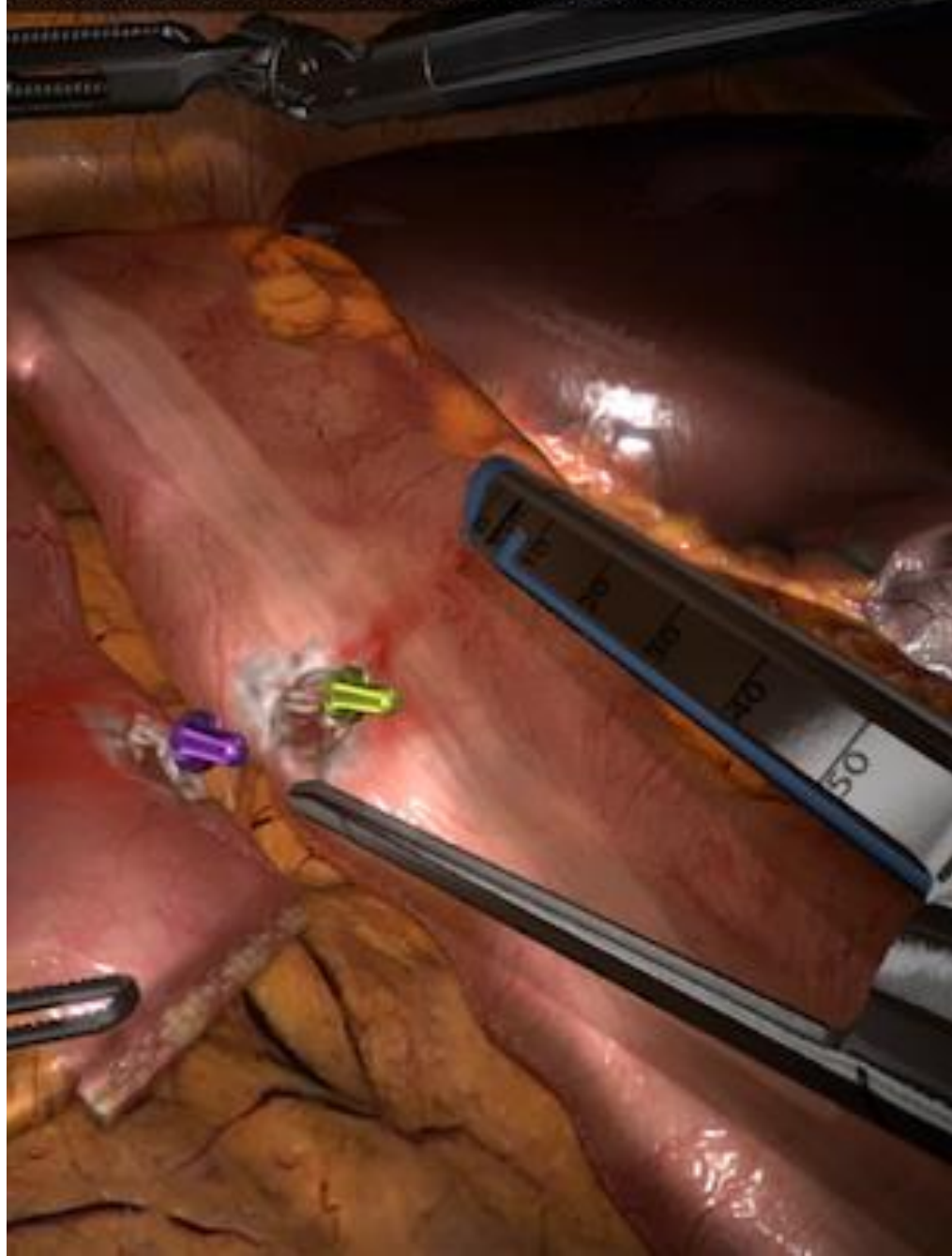
VirtaMed LaproS™

- LaproS™ Essential Skills
- LaproS™ General Surgery

[VirtaMed | LaproS™ innovative laparoscopy simulation](#)



the stapler and insert the jaws into the enterotomies



Da Vinci SimNow

- library of realistic simulations for practice of system skills, procedure training exercises, and virtual reality experiences
- train on da Vinci system
- performance measurement and customizable curricula to manage skills development

*4th floor OR location